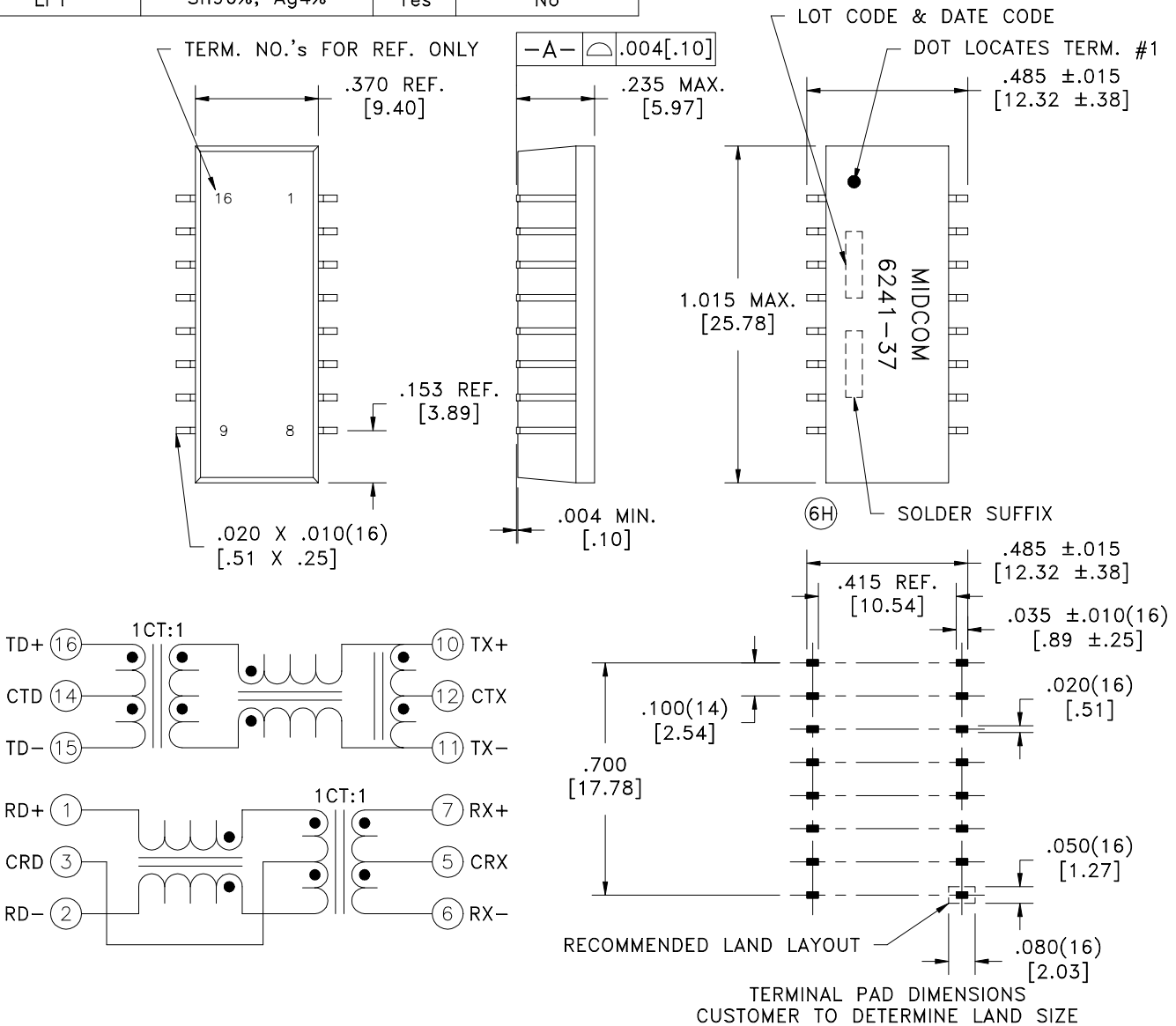


SOLDER SUFFIX	SOLDER	RoHS	LEAD(Pb)-FREE	(6H)(6J)
	Sn63%, Pb37%	No	No	
LF1	Sn96%, Ag4%	Yes	No	



**ELECTRICAL SPECIFICATIONS @ 25°C unless otherwise noted:**

INSERTION LOSS:	-1.1dB max., 300k - 100MHz.	
DIELECTRIC RATING:	1500Vrms, 1 minute tested by applying 1800Vrms for 1 second between 16-10(tie 1+16, 7+10).	
INDUCTANCE:	350uH min., 100kHz, 100mV, 8mADC, 7-6; 10-11, Lp.	
RETURN LOSS:	-18dB min., 500k - 30MHz.	-12dB min., 60M - 80MHz.
	-16dB min., 30M - 45MHz.	-10dB min., 80M - 100MHz.
	-14dB min., 45M - 60MHz.	
TURNS RATIO & POLARITY:	(16-15):(10-11) = 1:1, ±2%.	(1-2):(7-6) = 1:1, ±2%.
CROSSTALK:	-38dB min., 300k - 100MHz.	
DCMR:	-38dB min., 300k - 100MHz.	
OPERATING TEMPERATURE RANGE:	-40°C to +85°C.	
COPLANARITY:	All 14 terminals must lie on a plane within .004 [.10] of Surface A after lead tinning.	

(6F)	
AGENCY NUMBER	
UL 60950	E205930
CSA 60950 (Via CUL)	E205930

**Midcom, Inc.**  
Watertown, SD USA  
Toll Free: 800-643-2661  
Fax: 605-886-4486

Unless otherwise specified:  
Tolerances: Fractions: ±1/64  
Angles: ±1° Decimals: ±.005[.13]

DRAWING TITLE  
**TRANSFORMER**  
PDFP-G16

REVISIONS: SEE SHEET 1

**Midcom**

DRAWING NO. (6H) REV.  
**000-6241-37R/-LF1** 6J  
6/05

SCALE --- SHEET 2 OF 11

This drawing is dual dimensioned.  
Dimensions in brackets are in millimeters.

DWG # 000-6241-37R/-LF1